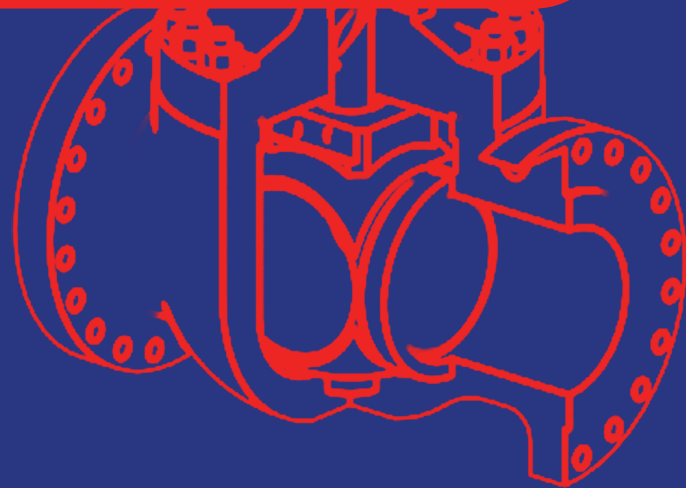




• ***Rising Stem Ball Valves*** •



Ideal for applications
that require zero leakage
and frequent operation



Rising Stem Ball Valves

No Rubbing Between Sealing Surfaces

The tilt-and-turn action eliminates seal abrasion, which is the major cause of seat wear in conventional Ball, Gate and plug valves.

Injectable Packing

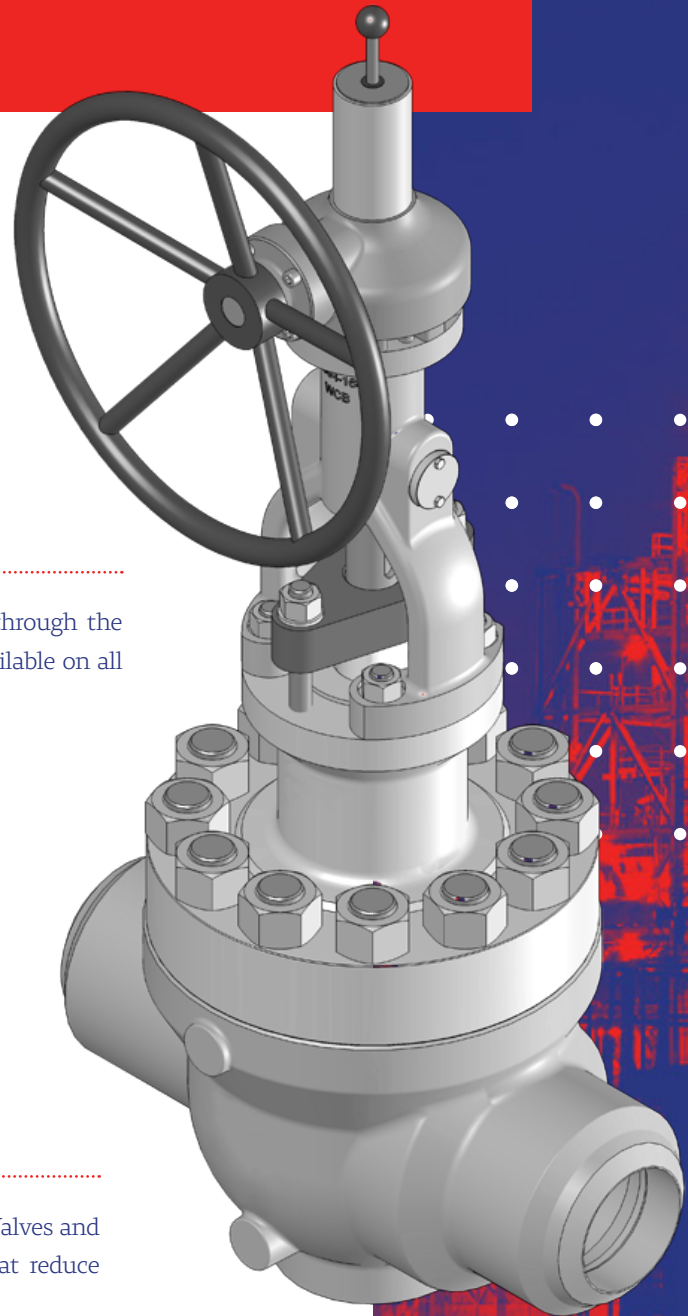
For in-service maintenance, stem packing material is injected through the packing fitting, giving complete control of fugitive emission. (Available on all enclosed bonnet models.)

Single- Seat Design

The single, stationary seat in the ORBIT valves seal in both directions and avoids the problem of trapped pressure between seats.

Long Life

ORBIT valves replace troublesome Ball valves, Gate valves, Globe Valves and Plug Valves. The ORBIT design has performance advantages that reduce plant outage and reduce the cost of ownership.



Optimum Flow

Full port or reduce port Openings Give high C_v Figures. System pumping efficiency is enhanced And Erosion problems are reduced.

Top-entry Design

In-line inspection and repair, after system Depressurizing, simplifies maintenance.

Dual Stem Guides

Hardened stem slots and tough guide pins Control the lift-and-turn action of the Stem.

Self-Cleaning

Tilting the core away from the seat before rotation causes Immediate flow around 360 degrees of the core face. Product Flow flushes any foreign material away from the seat without localized, high velocity erosive flow.

Low-torque operation

ORBIT valves turn easily because seal rubbing is eliminated.

Wear-resistance Hard facing on Core

The Core face is hard, polished material that will endure difficult service, without loss of sealing integrity.

Mechanical Cam Closure

The Cam angle at the lower end of the stem provides a mechanically energized seal.

- **Note:** Never remove any part from and ORBIT valve unless specifically instructed to do so in the literature, or without first consulting a Cameron representative. Incorrect Procedure could result in personal injury and/or property damage.



GAZAR

Rising Stem Ball Valve (Single Seat)

Specifications: Top Entry (2 Pieces) | Flanged Ends
Full Port | Trunnion mounted | One piece stem
valves, enclosed bonnet

S T A N D A R D

Face to Face Dimension ANSI B16.10

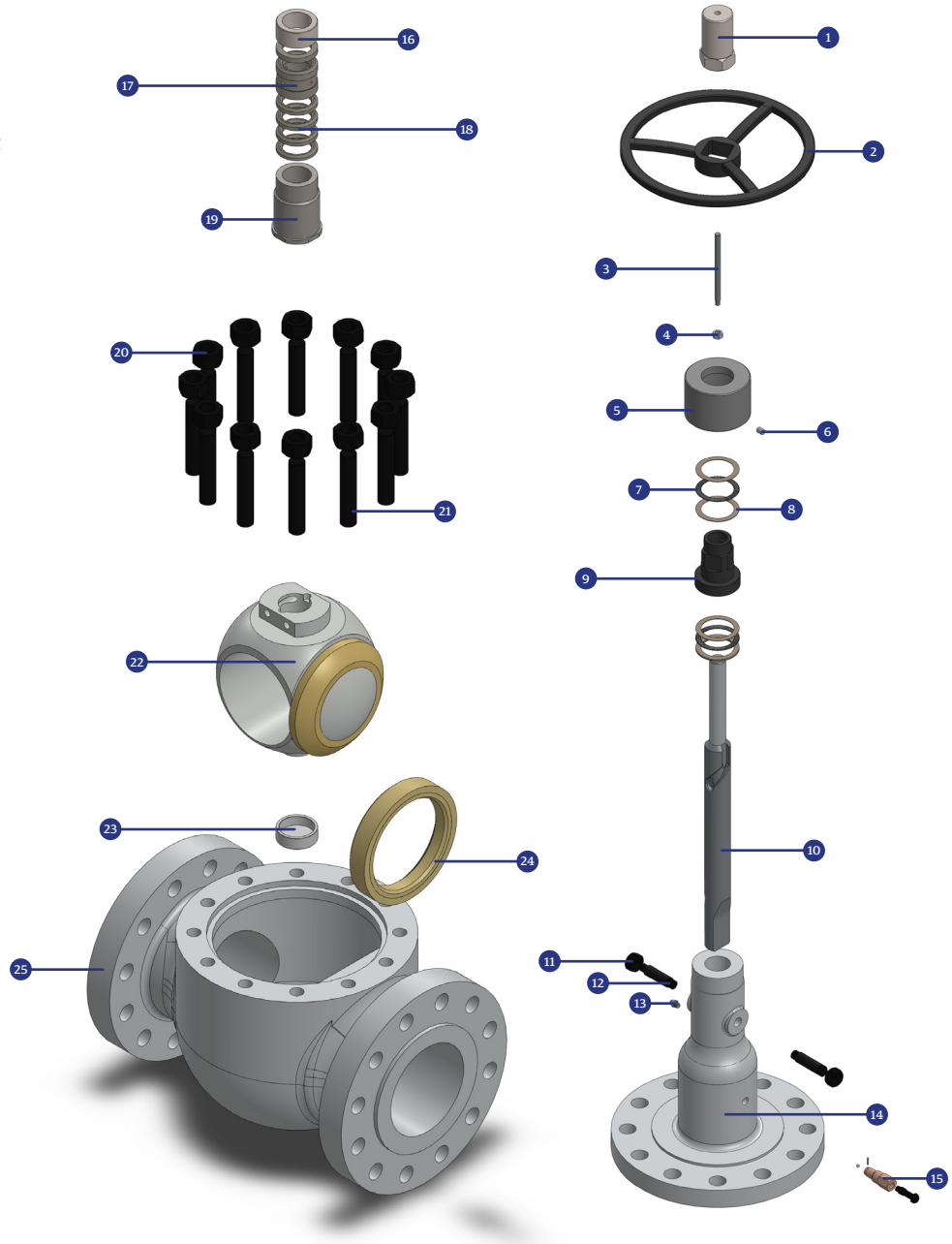
End Flange Dimension ANSI B16.5

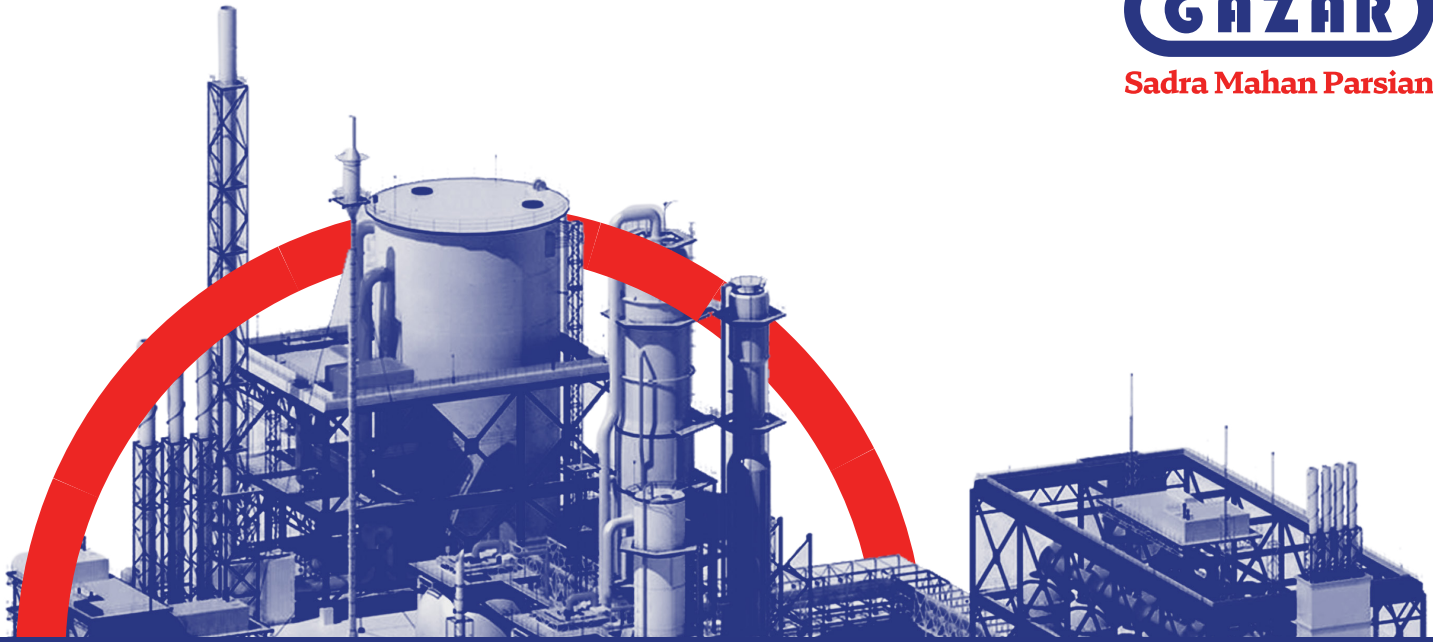
Design ANSI B16.34

Basic Design API608 / API6D

Fire Safe Design API607

- 1 Stem Protector
- 2 Handwheel
- 3 Position Indicator Rod
- 4 Position Indicator Rod Nut
- 5 Bonnet Nut
- 6 Set Screw
- 7 Needle Bearing
- 8 Bearing Race
- 9 Drive Nut
- 10 Stem
- 11 Stem Guide Nut
- 12 Stem Guide
- 13 Grease Nipple
- 14 Bonnet
- 15 Packing Fitting
- 16 Packing Chamber Bushing
- 17 Lantern Ring
- 18 Packing Ring
- 19 Bonnet Bushing
- 20 Body Stud Nut
- 21 Body Stud Bolt
- 22 Core
- 23 Trunnion Bushing
- 24 Seat Ring
- 25 Body





Unit 13, No 10,
Babak Markazi Alley
Nelson Mandella Bv,
Tehran, IRAN



021-88662786
021-88662914
051-35422413



sadramahan-co.com
info@sadramahan-co.com
sales@sadramahan-co.com
Fax: 021-88661857